



SC-IW 600 X Series

HIGH PERFORMANCE IN-WALL SUBWOOFER

INFORMATION



WE ARE THE SUBWOOFER SPECIALISTS.

Velodyne Acoustics was founded under this guiding principle in 1983.

And until today we have remained true to this credo: Velodyne Acoustics delivers a unique low-frequency foundation that really brings music, games and movies to life.

As a subwoofer specialist, we have dedicated our entire research and development work to this goal. Today, we are one of the subwoofer manufacturers that hold the most patents in this segment.



THIS IS THE NEW SC IW 600 X

Introduction

The all new SC IW 600 X is an affordable high output in-wall subwoofer that fits flush in a standard 2x4 stud wall. It delivers dynamic bass for Home theatre and music applications. With its own distinctive identity, the all new SC IW 600 X combines the essence of its predecessor with all new technologies used in new Velodyne Acoustics products today.

Each of the 4 driver components of SC IW 600 X has been re-evaluated and significantly improved. A highly efficient Carbon Fiber front firing driver produces amazing bass output, that brings your favorite movies and music to life.

This new SC IW 600 X subwoofer set a new standard in high performance, high value bass performance with incredible authority, accuracy and low distortion.

New Acoustic Design with updated Four Driver configuration

The SC IW 600 X incorporates two active long throw completely new designed 6,5" (16 cm) drivers with 2" four layer voice coils and two 14" x 3,5" passive radiators. Combined in a counterbalanced design that limits wall vibration. This unique approach creates as much radiating surface as one 14,5" driver but fits easily in a 2" x 4" wall with a small 16,5" x 19" (42 cm x 48 cm) footprint.

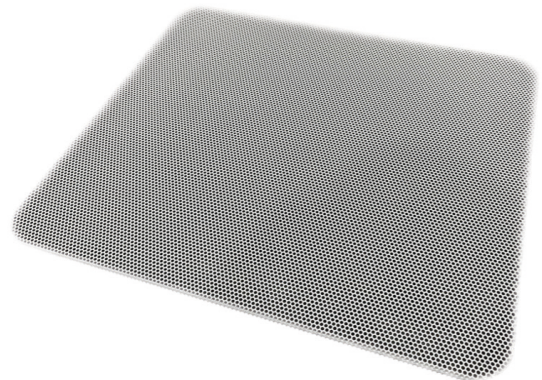
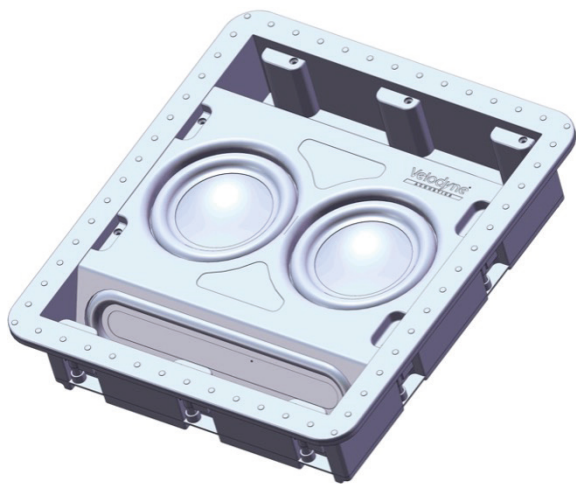
The two active 6.5" drivers are equipped with a completely newly developed carbon fiber cone, a low profile flow-optimized basket and a motor unit with a multi-ventilated 2" voice coil that can provide more Xmax as its predecessor.

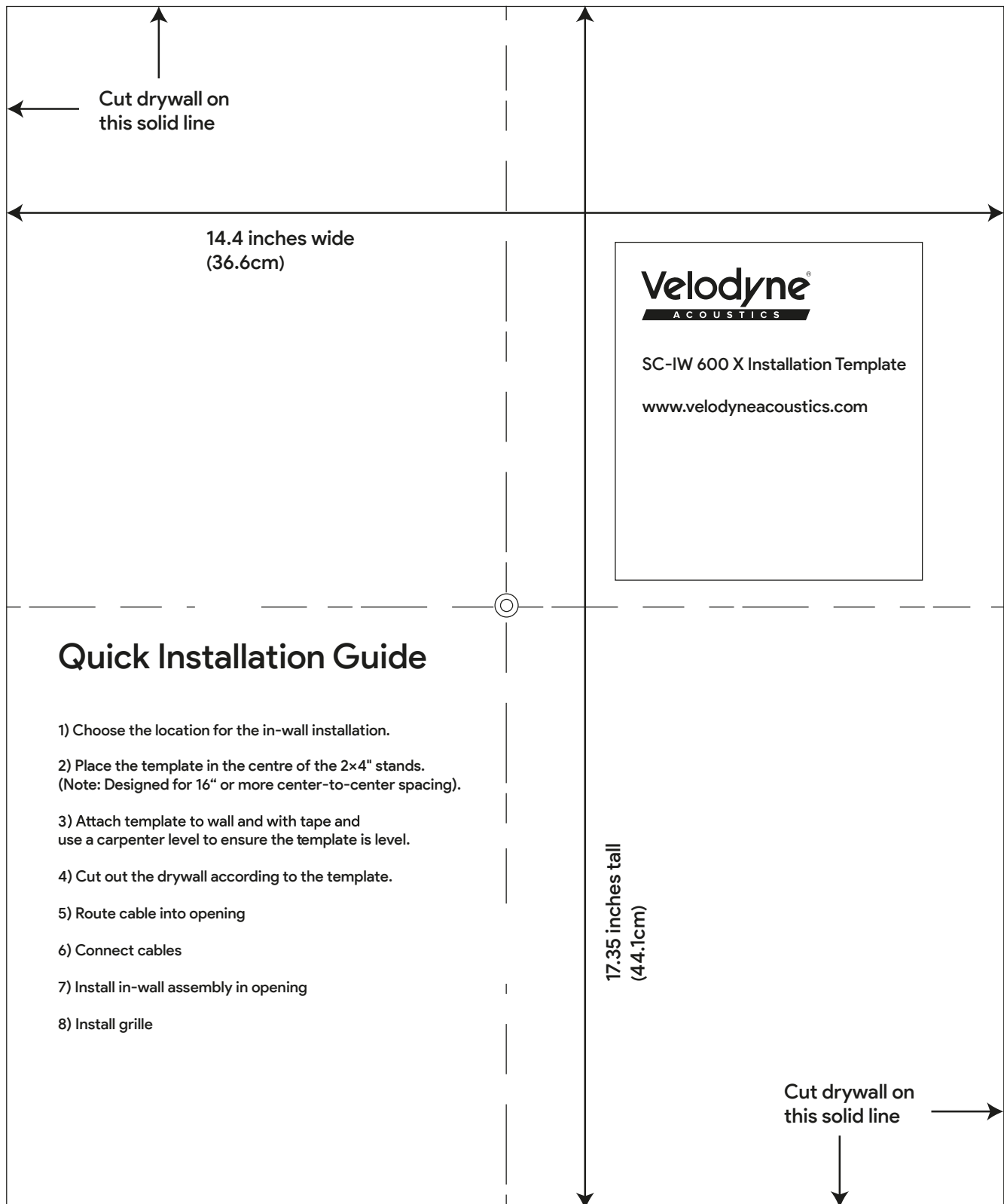
Easy to install Design

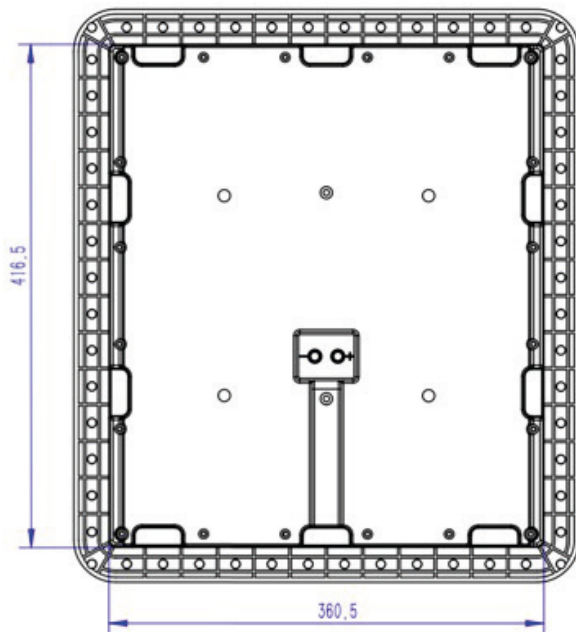
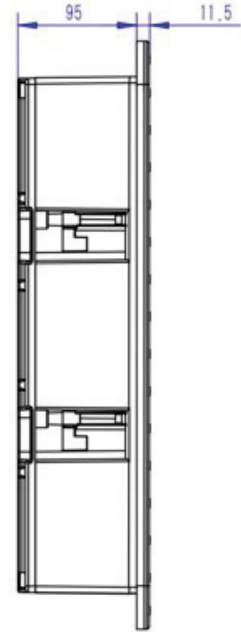
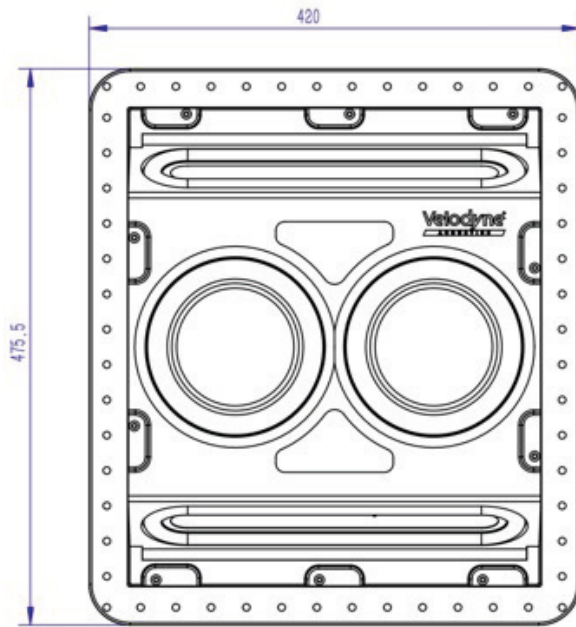
The completely new housing design of the SC IW 600 X is easy to install with its L-shaped mounting system, which is suitable for both new builds and retrofits. The completely new enclosure, manufactured using a special injection molding process, offers even more stability for distortion-free bass reproduction.

When redesigning the SC IW 600 X, we focused on the most inconspicuous wall mounting possible and the entire front baffle frame is now covered by a white paintable grill.

As this new SC IW 600 X is producing more SPL as its predecessor we also redesigned the grill by using hexagon openings to assure a 30% better airflow through the grill to prevent any unwanted noise or even rattling. Extra strong neodymium magnets with a thin felt layer, as well as new optimized foam rubber inserts additionally prevent resonances from the grill.







Subwoofer Specs

- Spring loaded loudspeaker input connectors
- RoHS compliant, lead-free construction, world-wide safety certifications
- Frequency range: (+/-3 dB) 30 Hz-120 Hz, (+/-10 dB) 26 Hz-170 Hz
- Dimensions (H/W/D): 420 mm x 476 mm x 95 mm
- Shipping Dimensions (H/W/D): 60 cm x 50 cm x 28 cm
- Weight (unboxed): 12 kg with Grille
- Shipping Weight: 16 kg

Driver Specs

- All-new proprietary 6,5" long-throw driver with high-precision tuned overhung motor configuration.
- 18 mm Xmax mech precision aligned excursion.
- 2" diameter Voice Coil with high current 4-layer high-purity copper wire windings
- High grade oversized Ferrite magnet motor
- Low profile air flow optimized basket, double vented
- Nitrile rubber extreme-excursion surround
- Lightweight invers carbon fiber cone for enhanced sensitivity and transient response

Passive Radiator Specs

- All-new proprietary 14" x 3,5" long-throw passive radiator
- Low profile air flow optimized basket
- Nitrile rubber extreme-excursion surround
- Lightweight flat carbon fiber cone for enhanced sensitivity and transient response

Accessories

- Paintable non-resonant hexagon mesh grille
- Installation Guide with cut out template